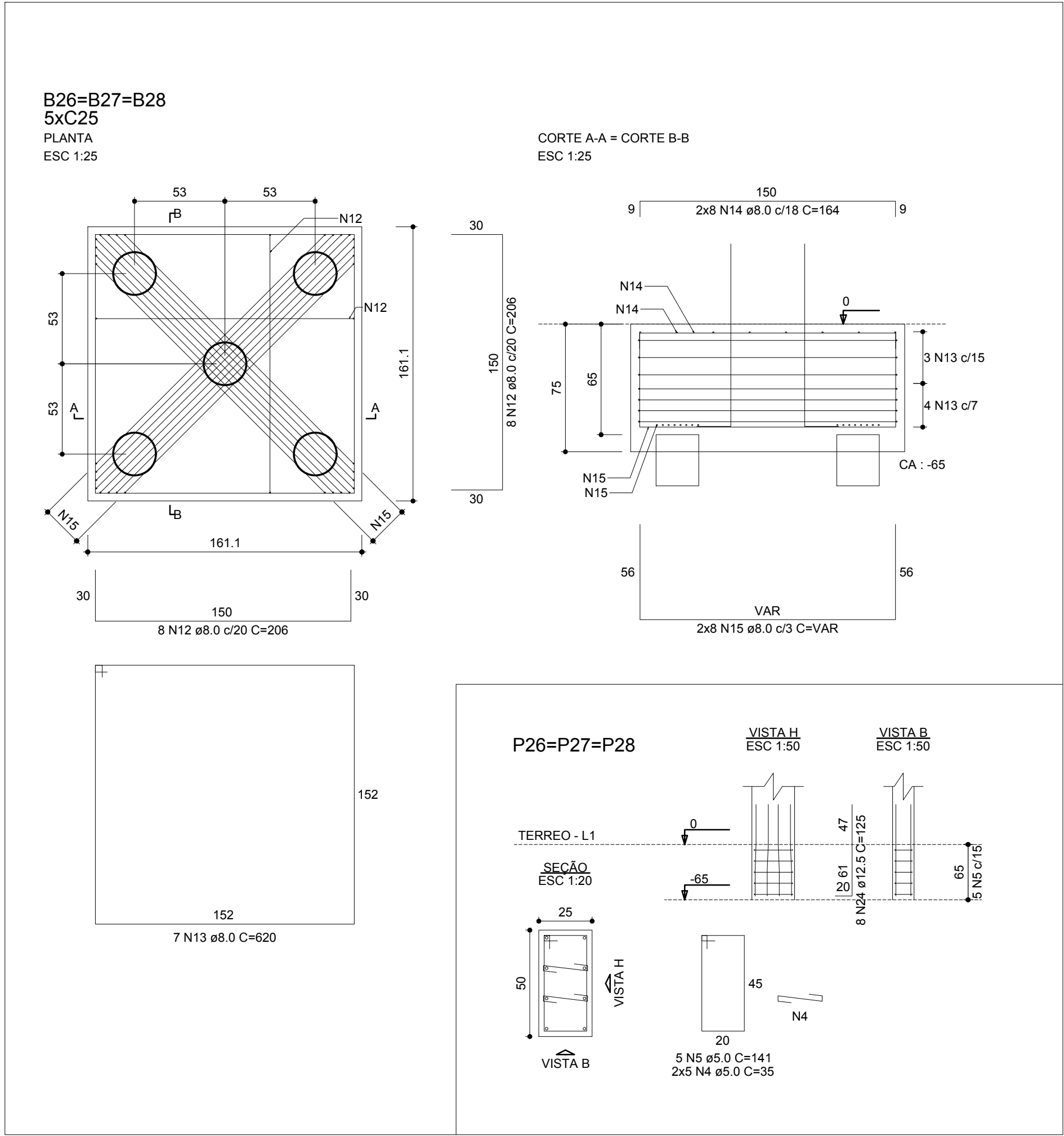
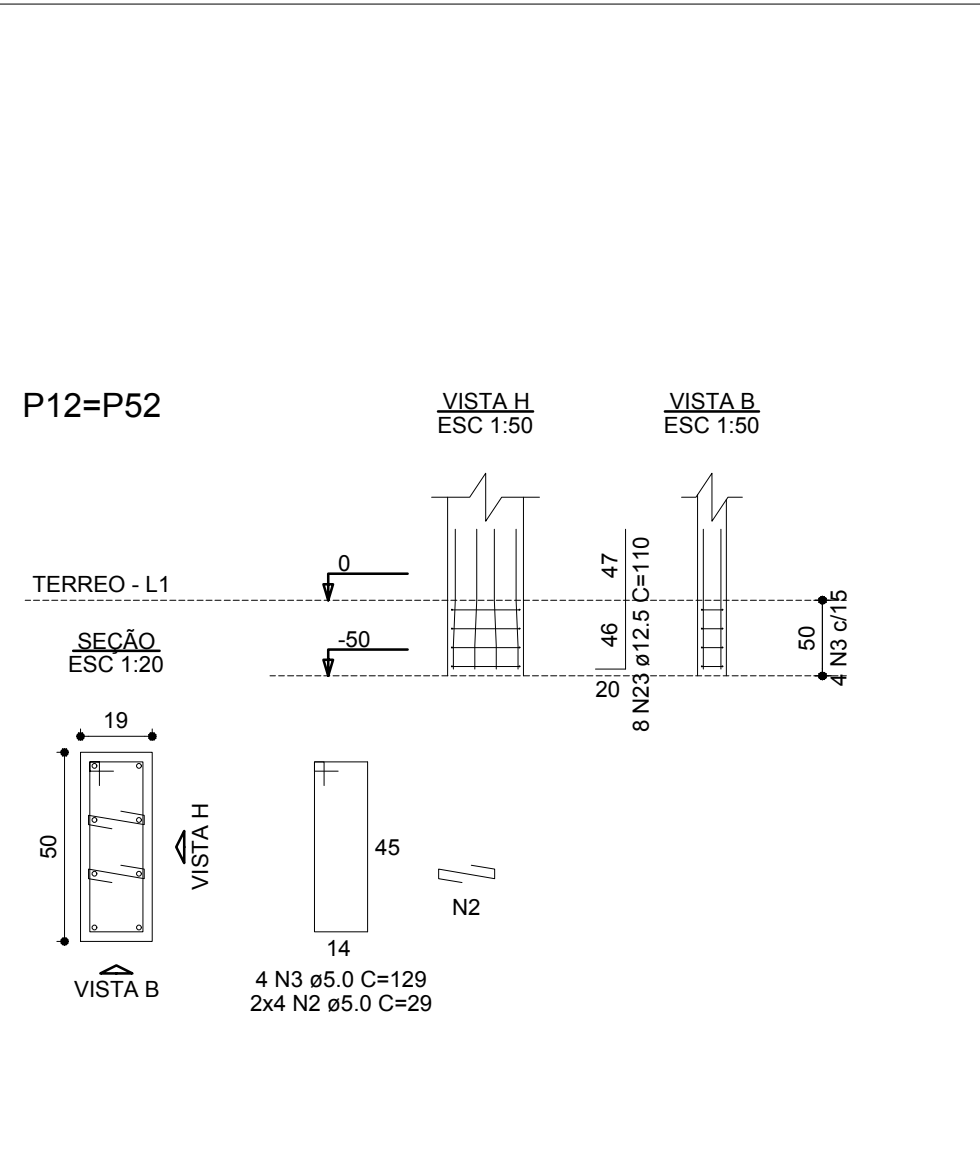
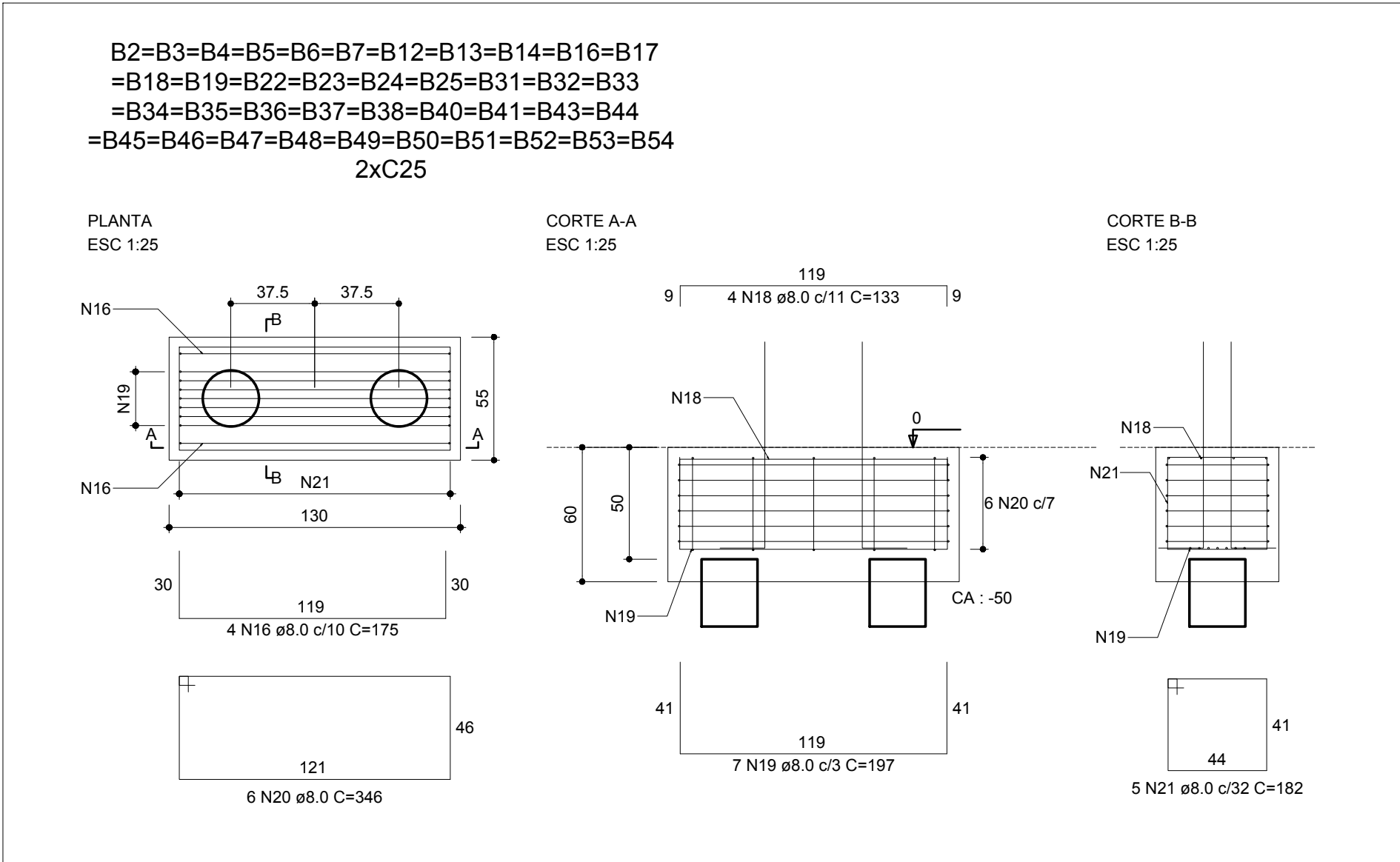
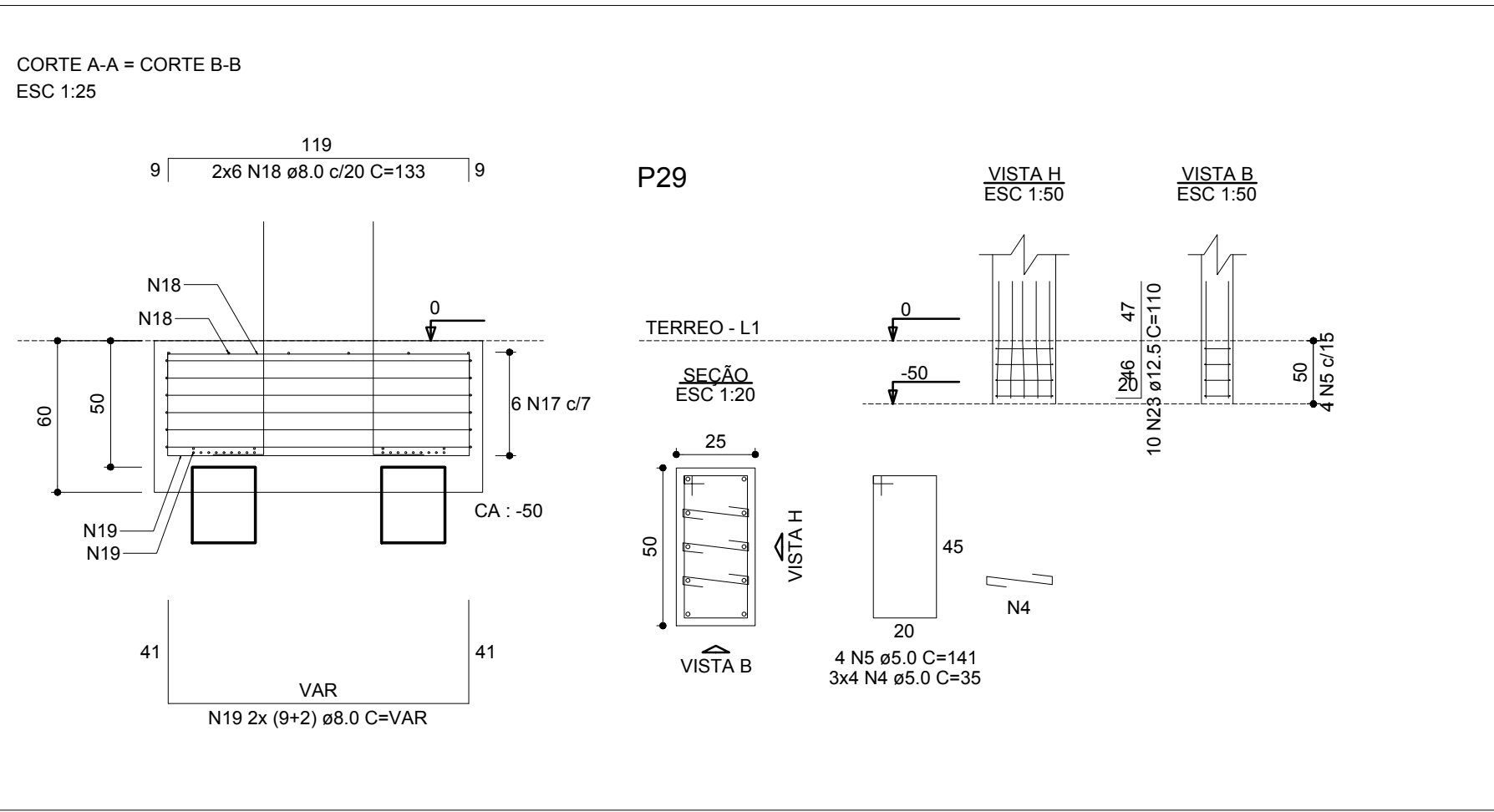
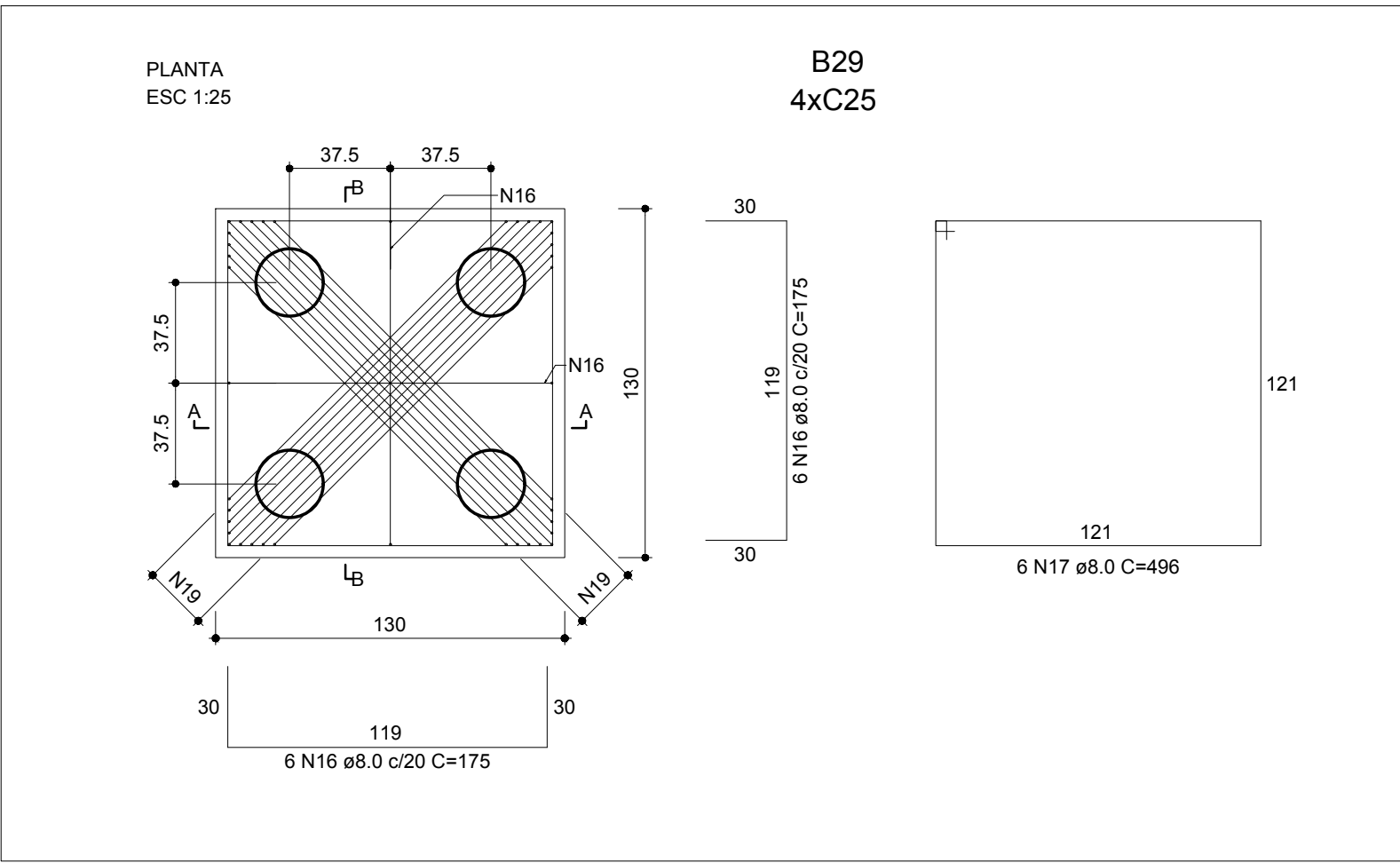
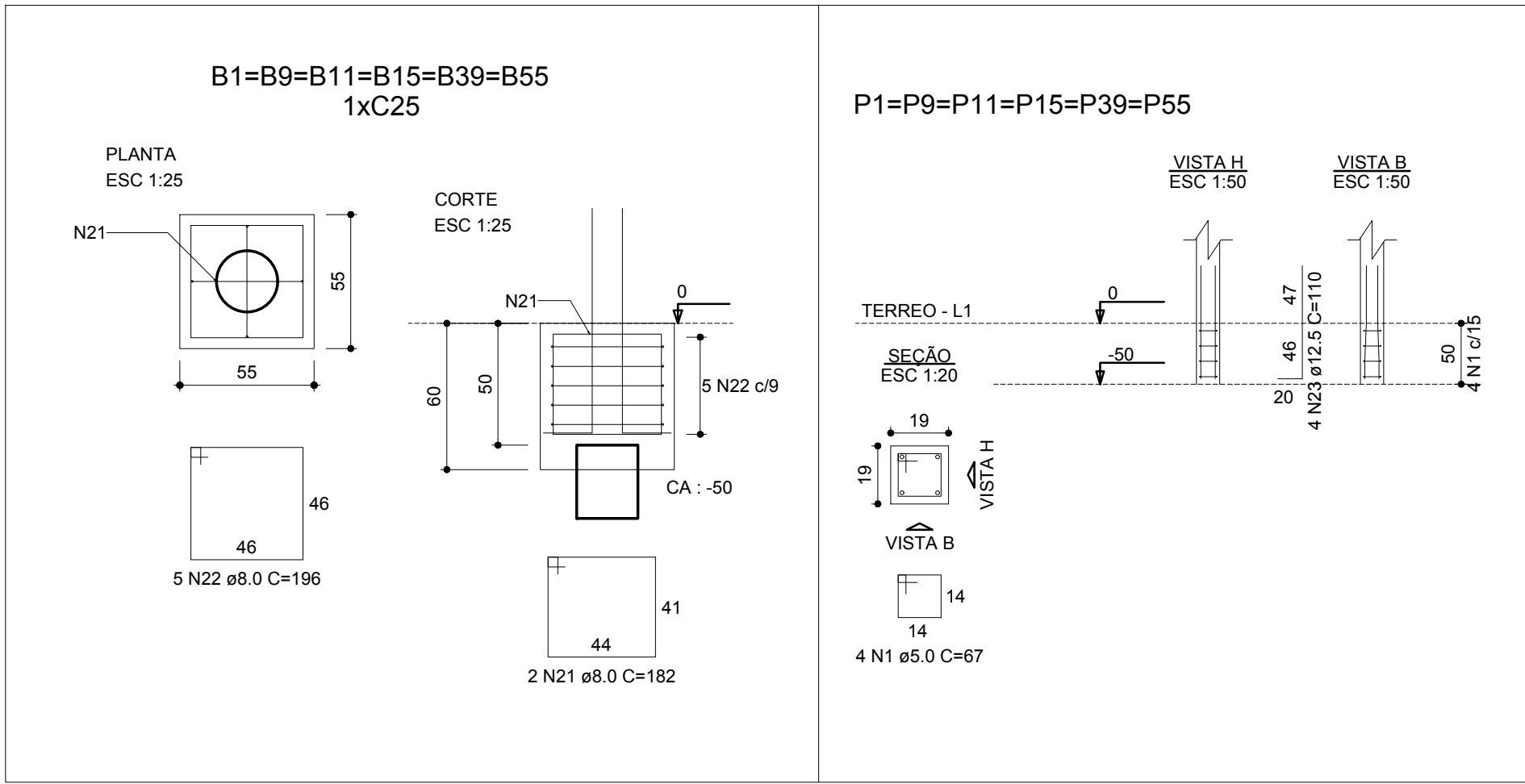


6  
5  
4  
3  
2  
1  
A1



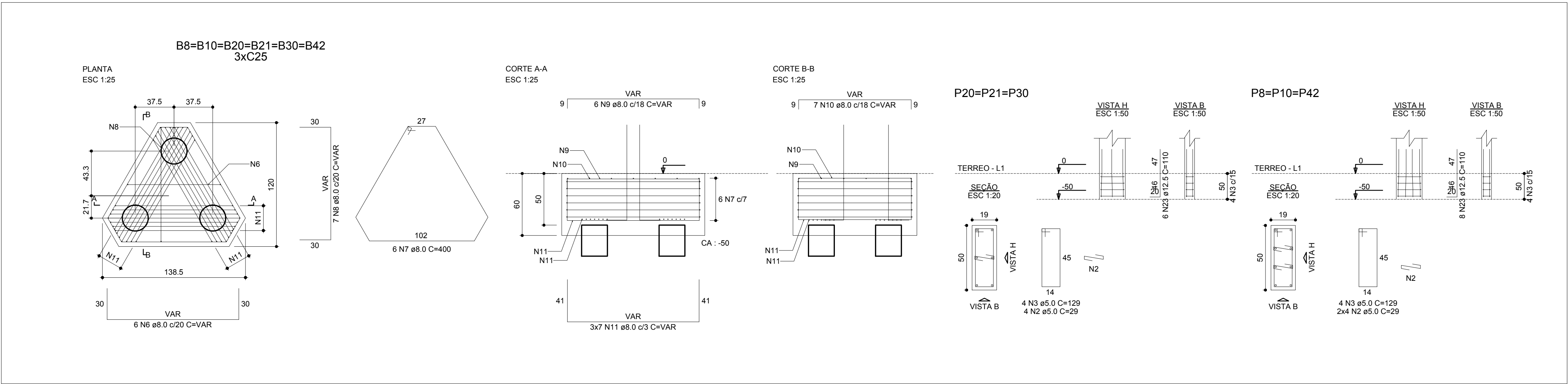
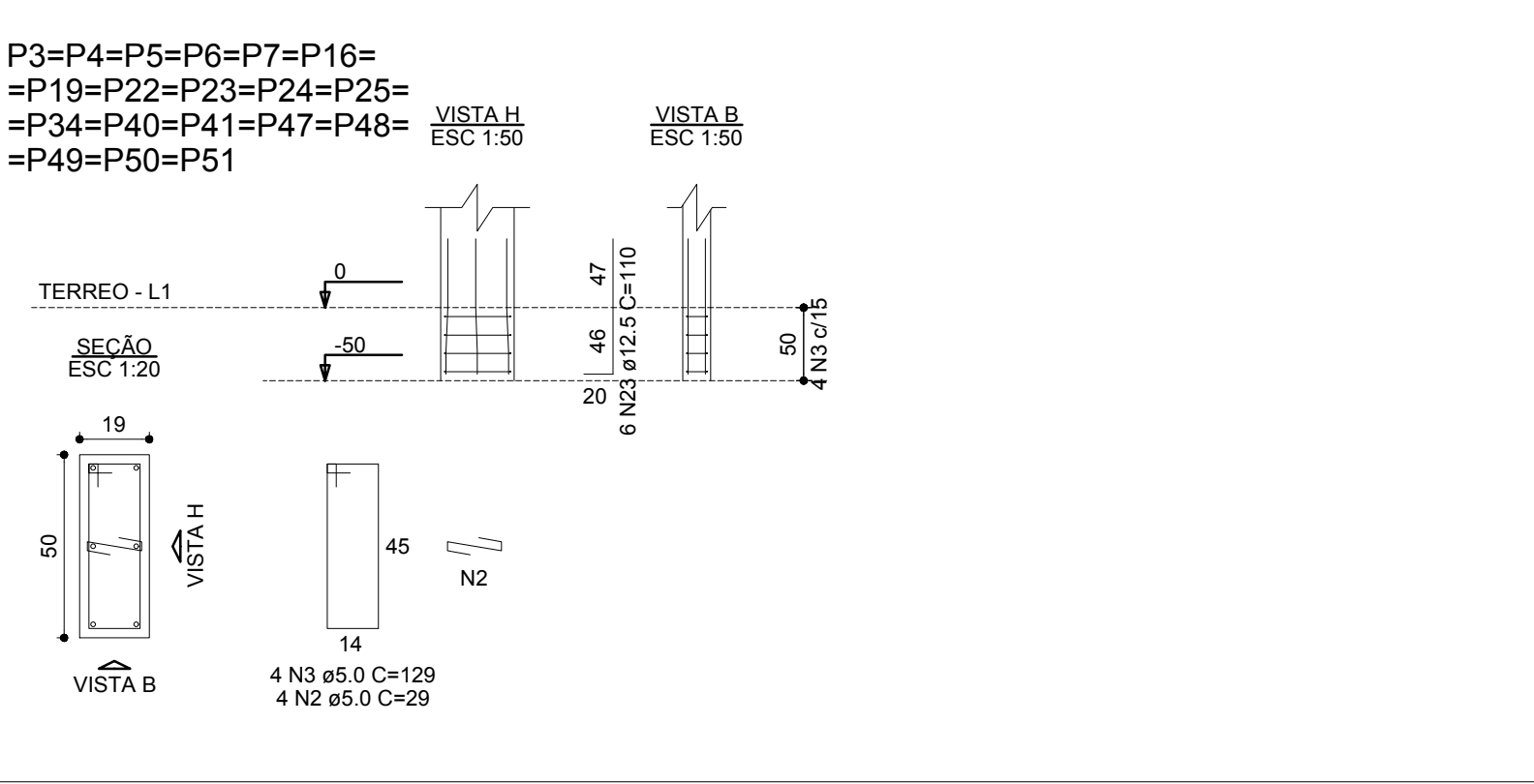
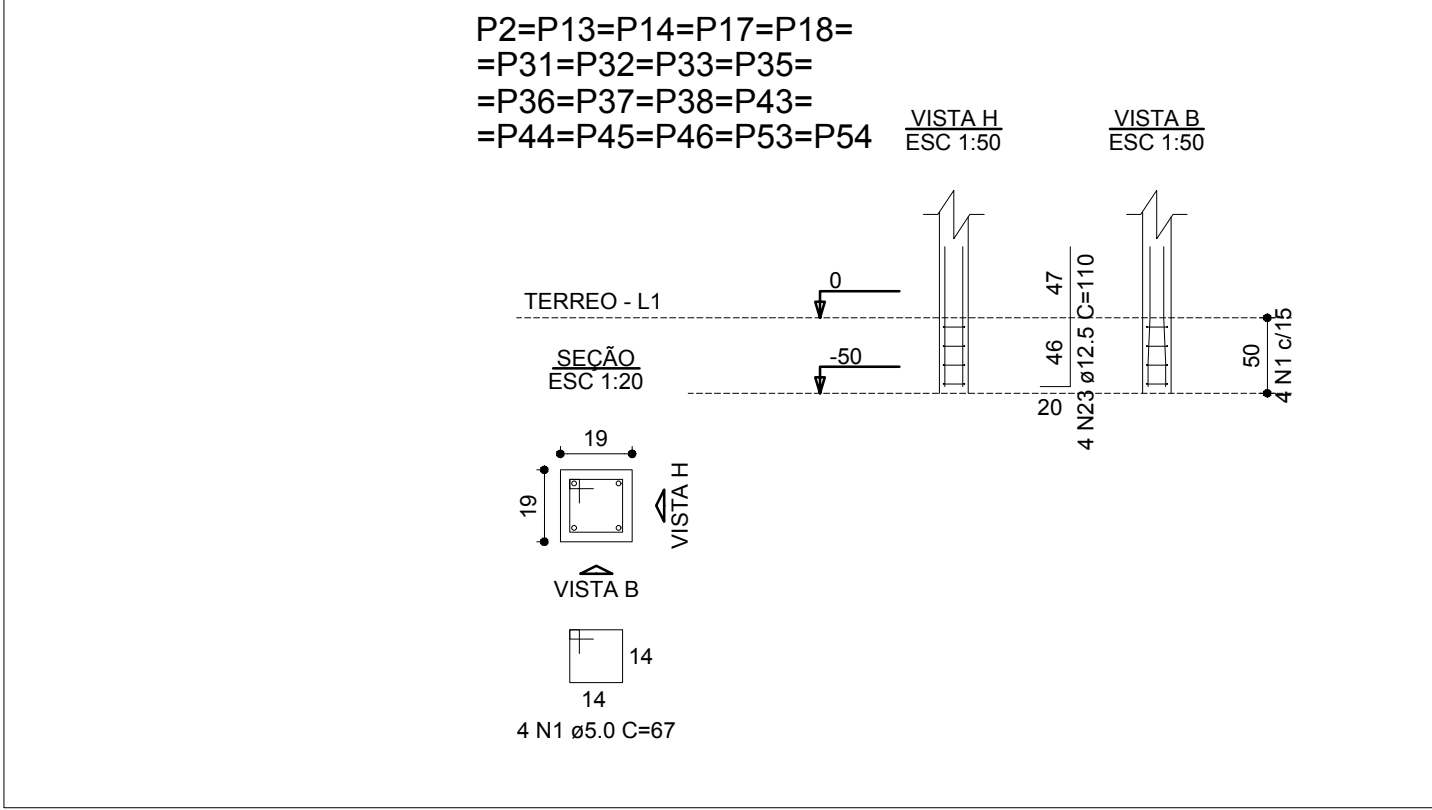
RELAÇÃO DO AÇO

AÇO	N	DIAM (mm)	QUANT	C.UNIT (cm)	C.TOTAL (cm)
CA60	1	5.0	96	67	6432
	2	5.0	128	29	3712
	3	5.0	108	129	13932
	4	5.0	42	35	1470
	5	5.0	19	141	2679
CA50	6	8.0	36	VAR	VAR
	7	8.0	36	400	14400
	8	8.0	42	VAR	VAR
	9	8.0	36	VAR	VAR
	10	8.0	42	VAR	VAR
	11	8.0	128	VAR	VAR
	12	8.0	48	206	9888
	13	8.0	21	620	13020
	14	8.0	48	164	7872
	15	8.0	48	VAR	VAR
	16	8.0	168	175	29400
	17	8.0	6	496	2976
	18	8.0	168	133	22344
	19	8.0	295	VAR	VAR
	20	8.0	234	346	80964
	21	8.0	207	182	37674
	22	8.0	30	196	5880
	23	12.5	278	110	30580
	24	12.5	24	125	3000

RESUMO DO AÇO

AÇO	DIAM (mm)	C.TOTAL (m)	PESO + 10% (kg)
CA50	8.0	3447.1	1496.2
CA60	12.5	335.8	355.8
	5.0	282.3	47.9
PESO TOTAL (kg)			
CA50		1852	
CA60		47.9	

Volume de concreto (C-25) = 30.15 m³  
Área de forma = 158.50 m²



		PREFEITURA MUNICIPAL DE DIVINO MG	
Nº DATA RESPONSÁVEL DESCRIÇÃO DA REVISÃO:			
FASE: PROJETO ESTRUTURAL			
PROPRIETÁRIO: PREFEITURA MUNICIPAL DE DIVINO MG			
CONTEÚDO: Detalhes dos Blocos Arranque dos Pilares			
ENDEREÇO: RUA ATRATINO VITOR DE OLIVEIRA ESQUINA COM RUA ADRIANO CAMPOS PEREIRA		CNPJ: 18.114.272/0001-88	
TÍTULO: CENTREDE REFERENCIA DE EDUCAÇÃO E CULTURA			
AUTOR PROJETO ARQUITETÔNICO / RT: CLÁUDIO DE MELO ROCHA CAU/BR 01.196-3			
DETALHAMENTO: AÇO: CA-50 e CA-60 CONCRETO: Fck = 25,0 Mpa			
VERSÃO: 1	DATA: 10/06/2022	AUTOCAD:	FOLHA: 03/32
ARQUIVO: BASE GERAL/ CIC DIVINO MG			